

APPENDIX

Assessment of the Impact of Community Engagement Students Report

Purpose: to assess the impact of student experiences with community engagement and Service> v] v P
v Z] } À Z X

Response rate: 201 µ À ' '] Z l v } u o } } (ð ò 9

Survey method: online via Qualtrics survey.

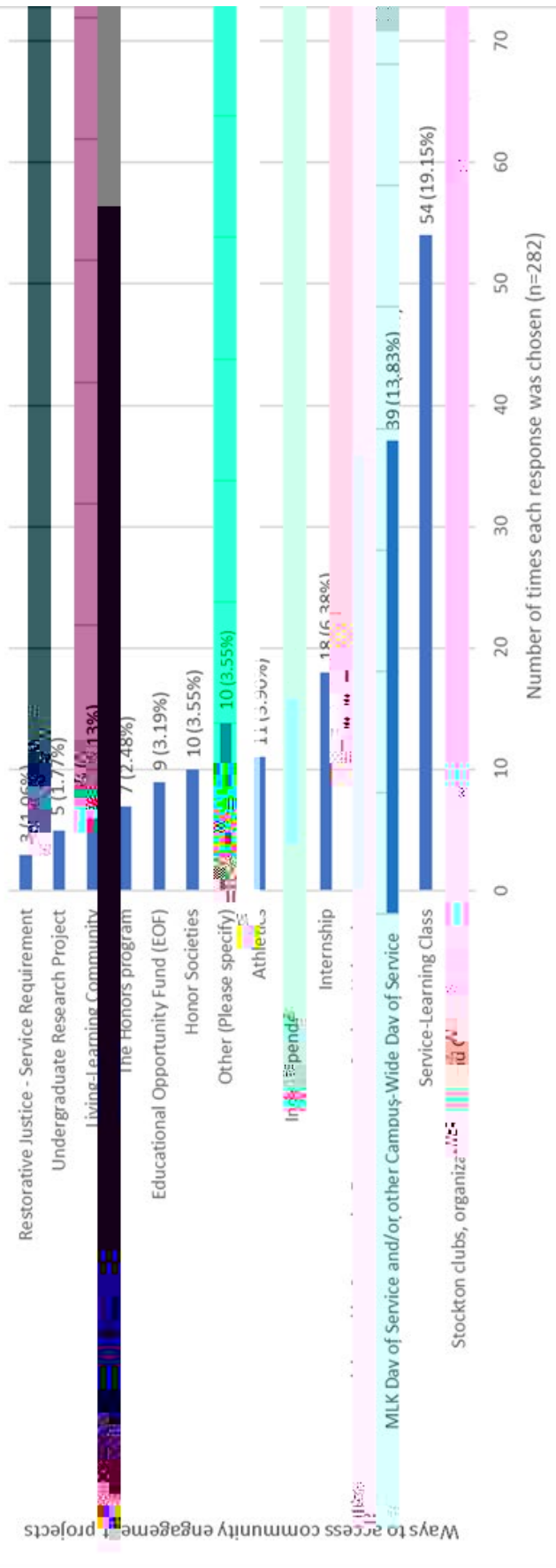
Data collec on period: April through May of 2023

Sampling method: Non- }] o] ' u o] v P

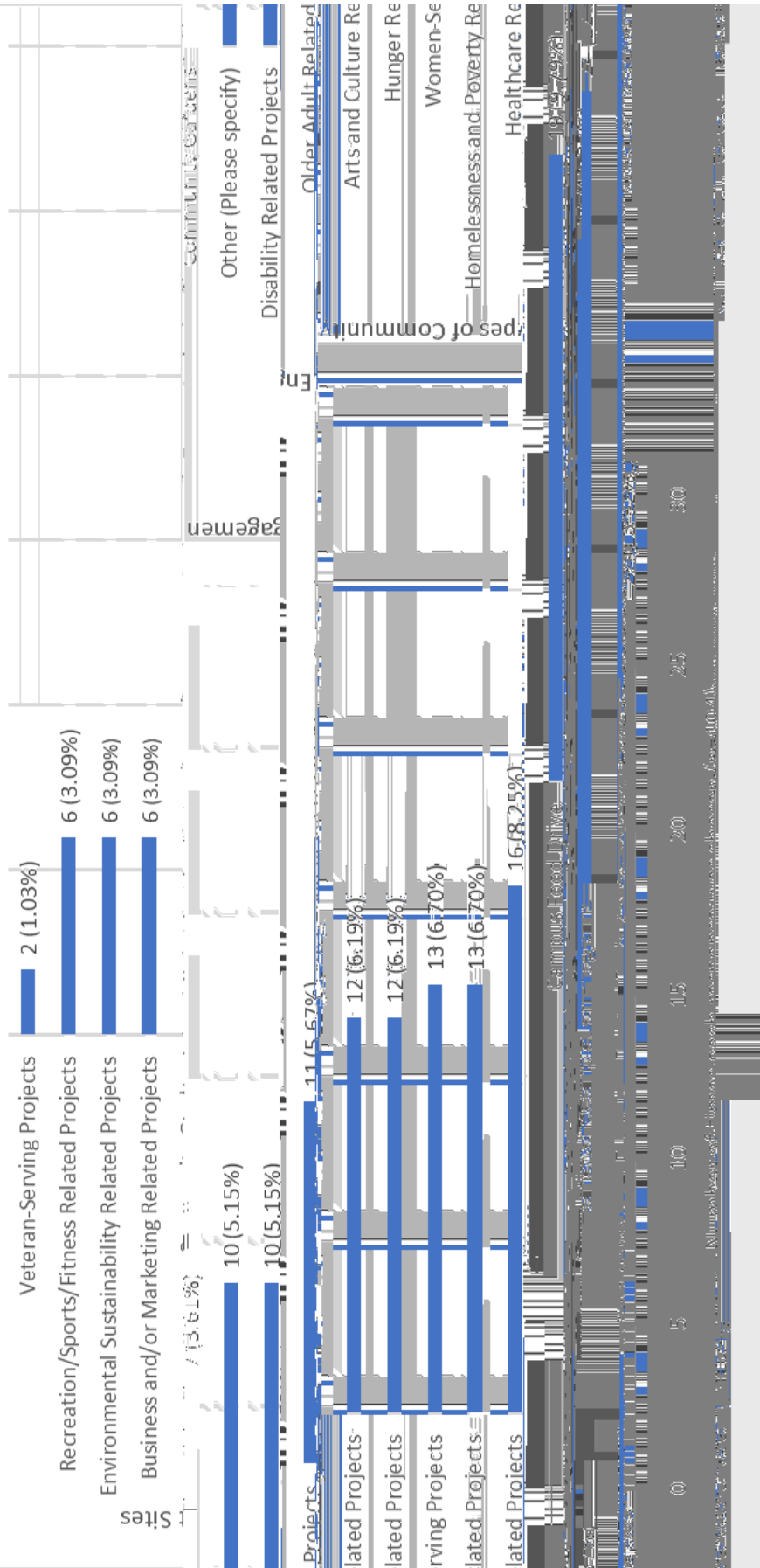
Presenta on of Findings

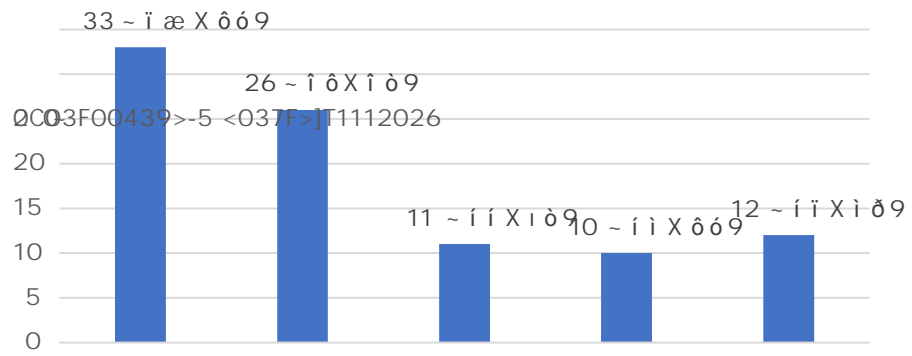
The sample size for the 2023 Impact of Community Engagement survey increased] v î î î î (} u î î î }
î î î dZ µ À ' ' v } , a z d c Z (µ ω ω v P µ v } v } µ ' - }] ']] v u
µ À ' + } U µ Z u o ' µ v o o ' o P µ À Z ' v Z
had } u o } v ð ò 9 ~ } } (Z î î î µ v ' Z } P v Z µ À ' U î î
Z v µ u } (µ v µ } u } ω A v P o f e a c h] v Z } v P X u } P
Z µ v } v] v P } Z µ À ' Z } ' Z Z } À o o P
' î ò X í ð } o X d Z À P P } (] } v o µ v } u o
} î æ O î í X î

Q2 - Which of these have you used most often to access community engagement projects? (Choose all that apply)



At which of the following categories of programs, if any, have you worked in community partnerships? (Choose all that apply)





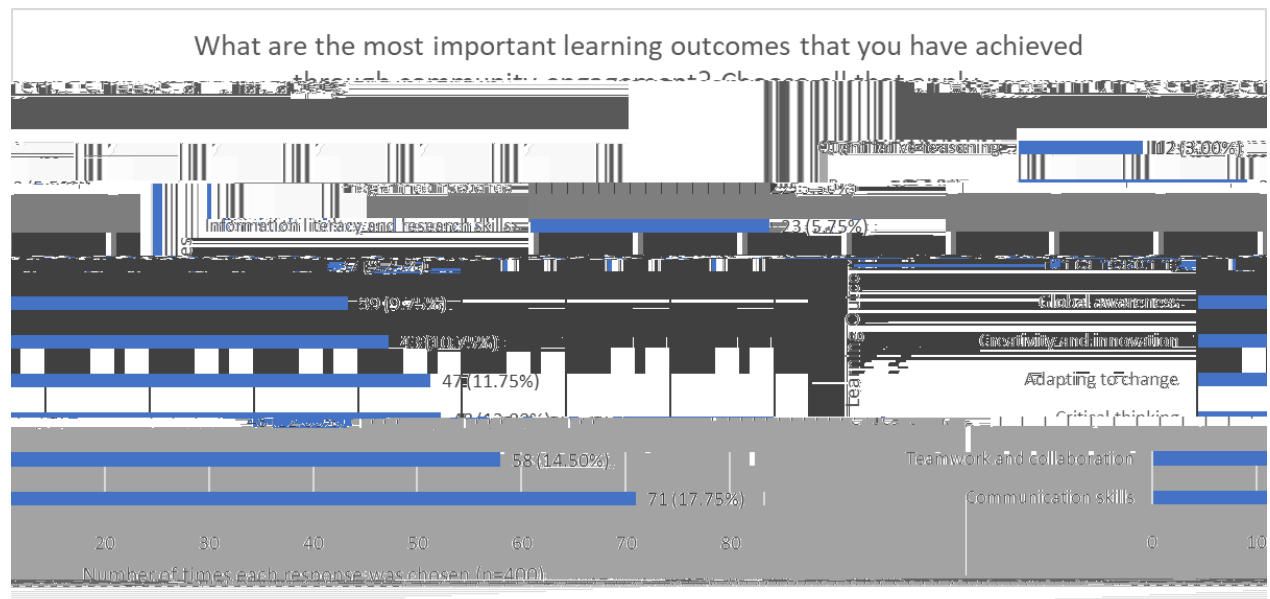
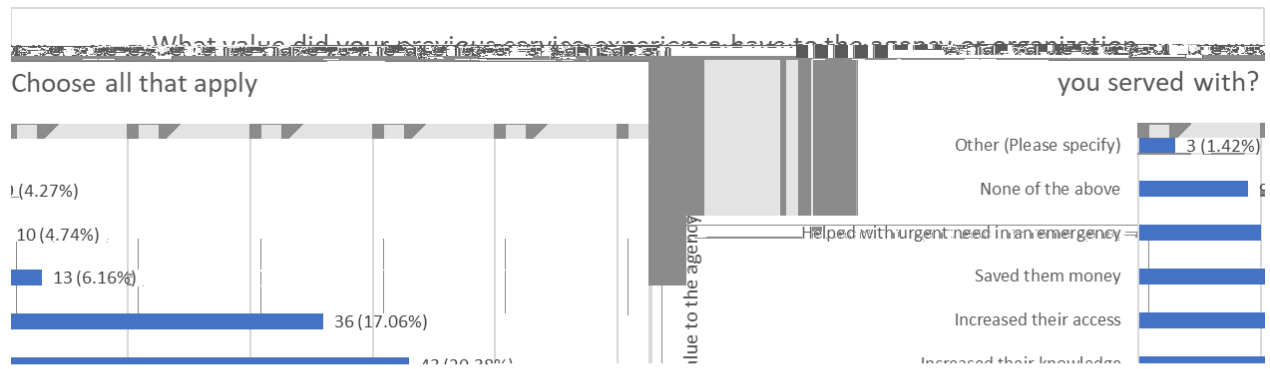


Table 1. Frequency distribution of students' self-assessment of the impact of community engagement

Conclusion

$dZ \sim \mu \int \dots + Z \dots$
 $\mu \dots \int \dots - Ks / \mu \dots X Z \dots$

•