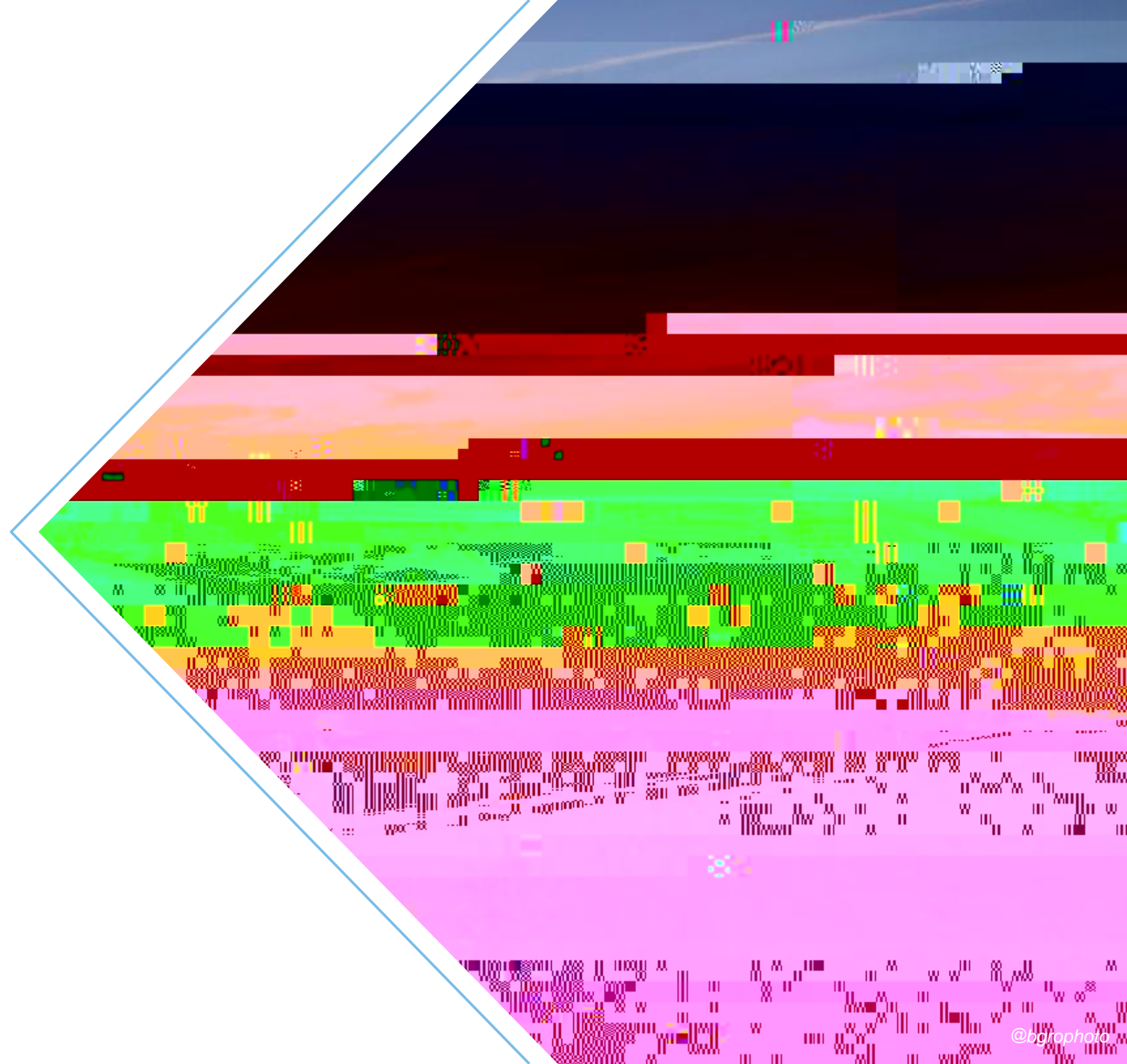




AC Campus Expansion & Programming Advisory Services

BOARD OF TRUSTEES UPDATE

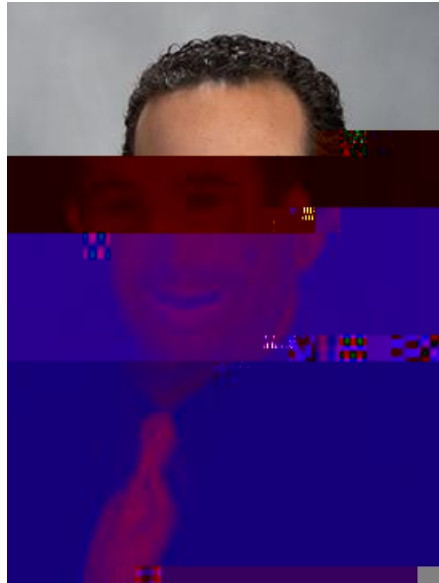
SEPTEMBER 11, 2024



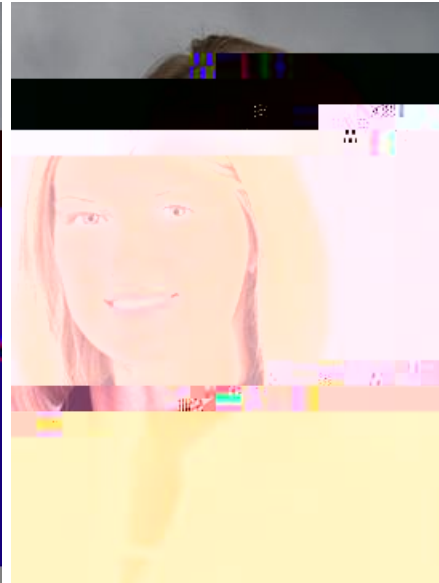
Introduction

B&D TEAM

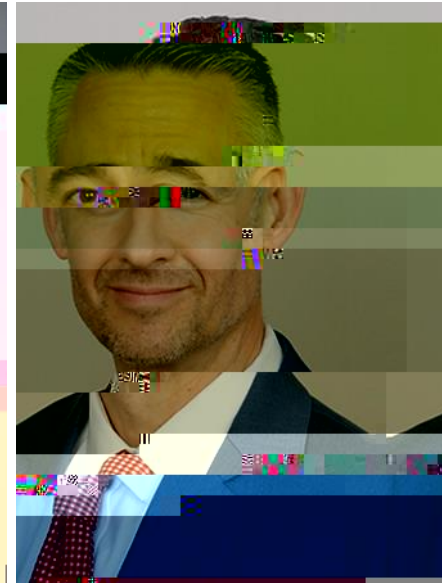
Development advisory, research & analytics to achieve informed outcomes.



Jeff Turner
President



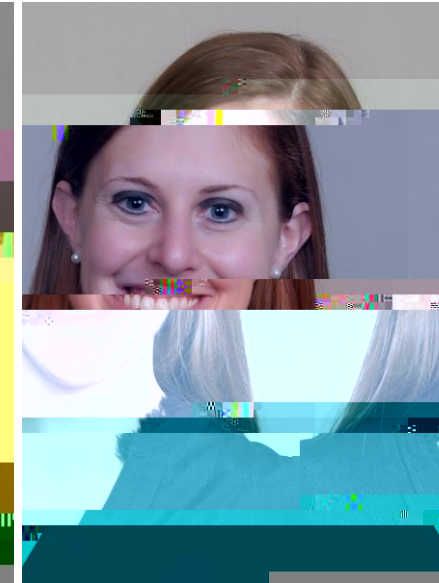
Katie Karp
Senior Vice President



T.J. Logan



Ellery Ammons
Senior Associate



Jill Schoenfeld
Senior Analyst

Partnering with Stockton since 2019

Supported planning efforts leading to the opening of Kesselman & Parkview Halls

30

Years in the Industry

\$40B+

Developed Projects

1,200+

Completed Projects

100+

P3 Projects

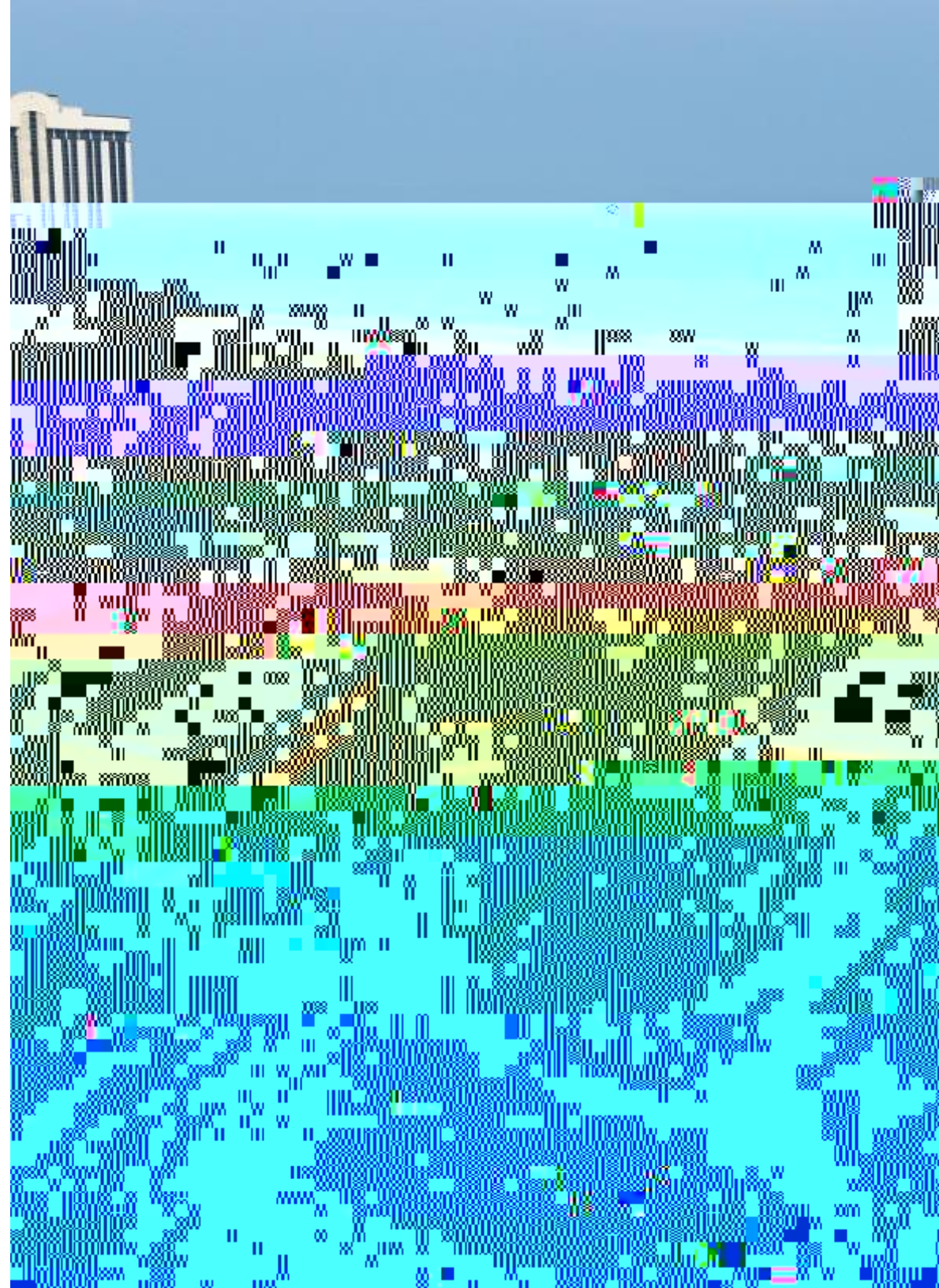
\$5B+

P3 Higher Education
Advisory Projects

20+

Higher Ed Projects
in NJ

Project Scope

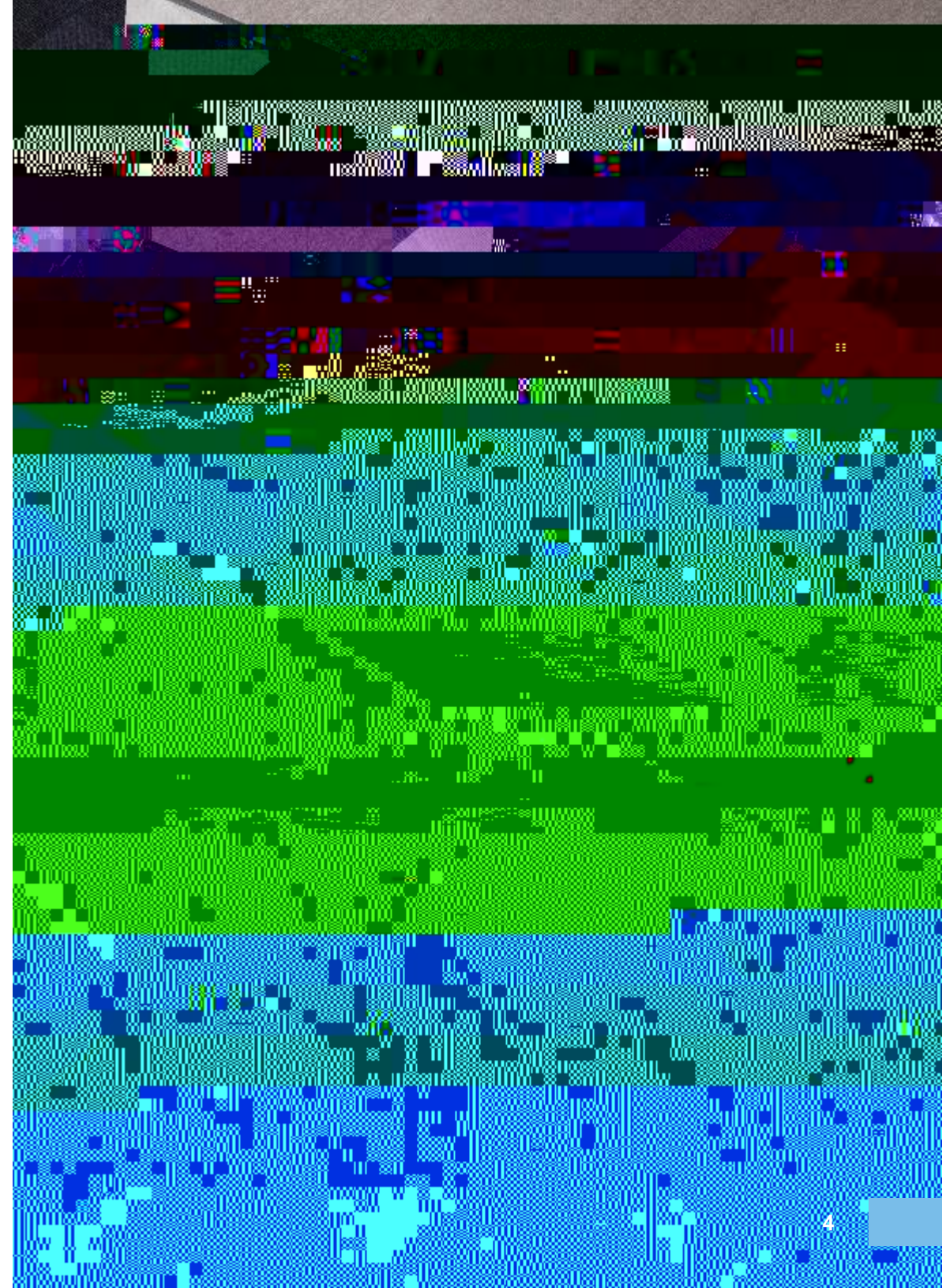


Project Outcome

B&D RECOMMENDATIONS TO THE TF ON AC EXPANSION

B&D believes that Stockton is not ready to proceed with Phase 3 expansion in AC at this time, as the University must first establish a clear identity and purpose for the AC Campus.

Specifically, the University should **reposition AC** as a **pre-professional / professional campus** to support **upper-division, graduate, and nontraditional students** in advancing their post-graduate careers.





B&D proposes the following next steps for consideration by the Presidential Task Force:

- 1. Inform the upcoming University-wide Strategic Plan** and modify recommendations as necessary to ensure alignment.
- 2. Define a comprehensive undergraduate residential experience**

Thank you.

VISIT BDCONNECT.COM
FOR MORE INFORMATION.

